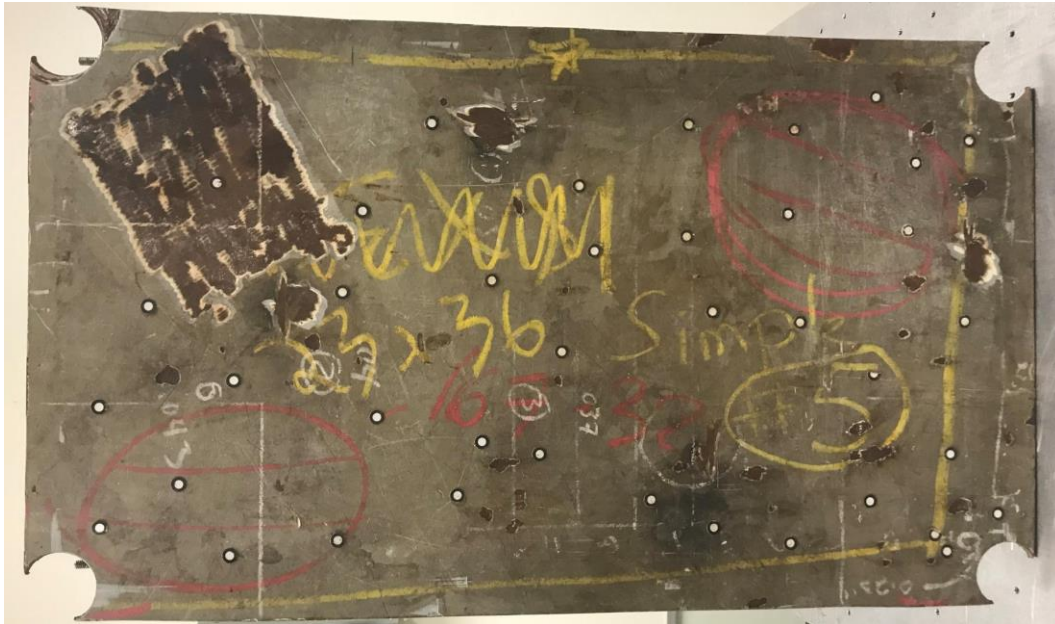


Eddy Current Thermography heating on:

Plate : 444 mm (17.5 in) x 762 mm (30 in);

Paint thickness = 0.45 mm (1/64 in)

Plate thickness = 6.35 metal + 0.45 mm paint = 6.8 mm (1/4 in + 1/64 in = 17/64 in)



Front (inspection side)



Back (hidden face)

Manual ECT
(with cooled camera)

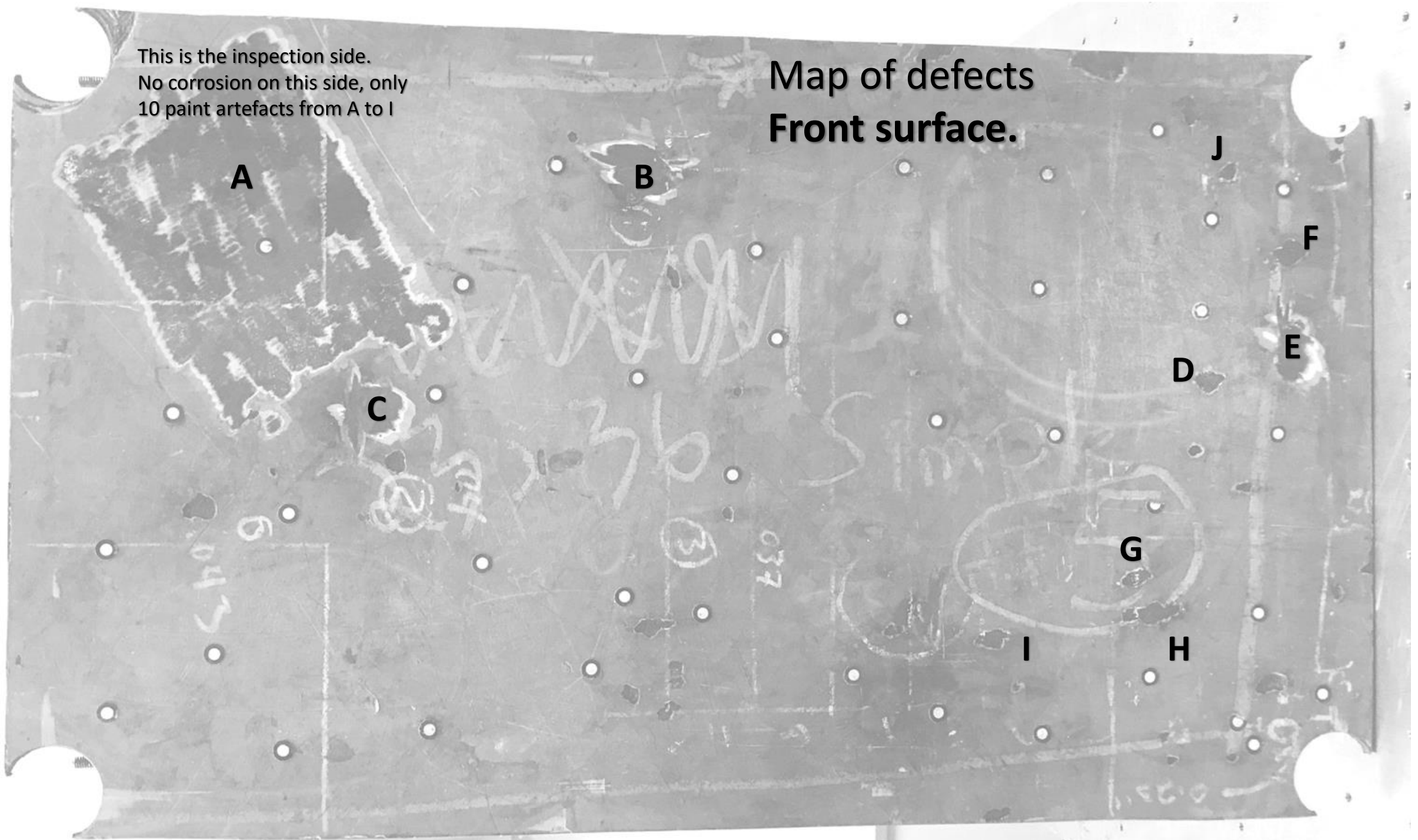


Robotic line scan ECT
(with uncooled camera)



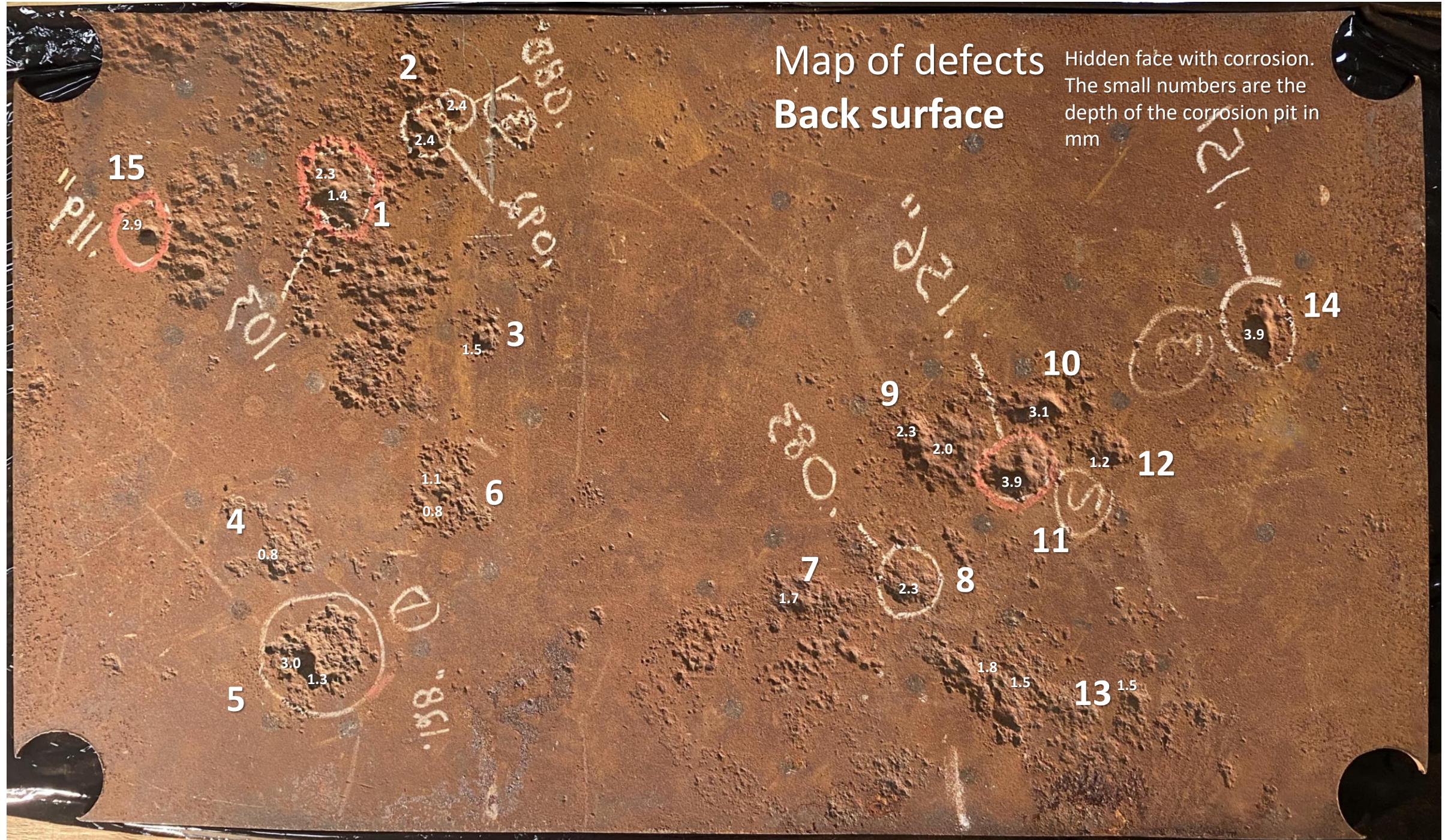
This is the inspection side.
No corrosion on this side, only
10 paint artefacts from A to I

Map of defects
Front surface.



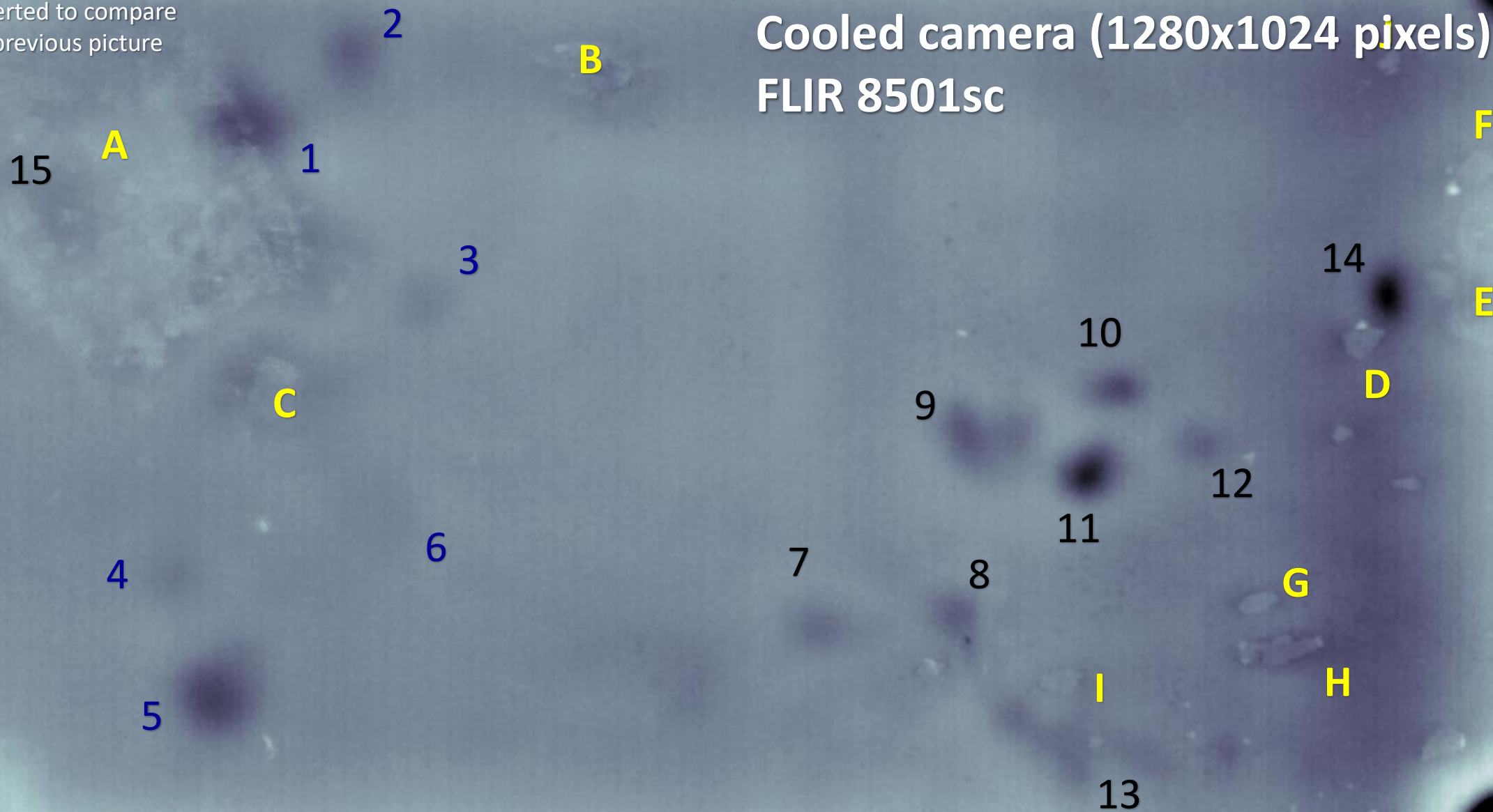
Map of defects Back surface

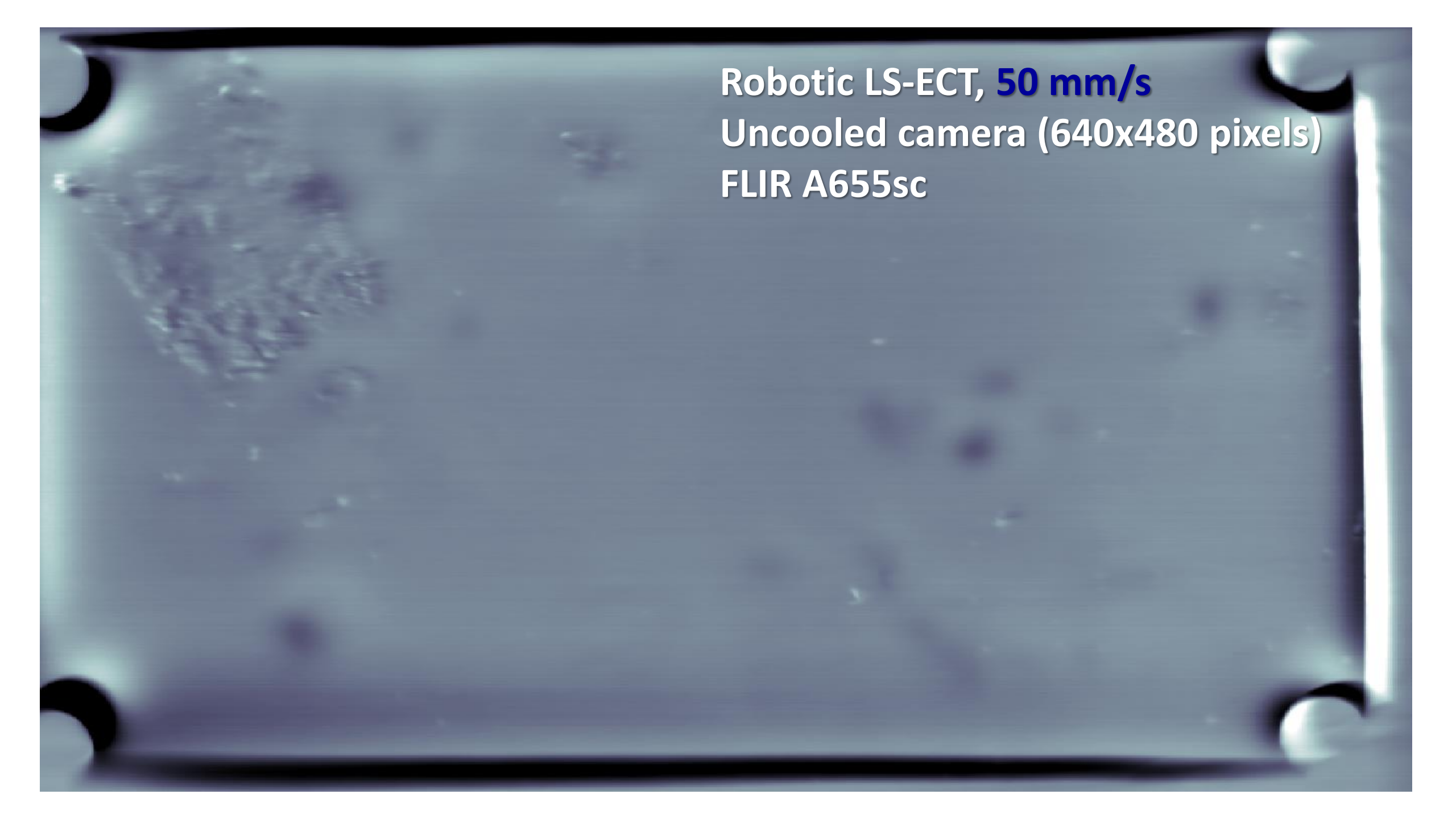
Hidden face with corrosion.
The small numbers are the
depth of the corrosion pit in
mm



Letters = front paint defects
Numbers = back corrosion defects
Image is inverted to compare
against the previous picture

Manual ECT
Cooled camera (1280x1024 pixels)
FLIR 8501sc





Robotic LS-ECT, **50 mm/s**
Uncooled camera (640x480 pixels)
FLIR A655sc

Robotic LS-ECT, **25 mm/s**
Uncooled camera (640x480 pixels)
FLIR A655sc

